

# DMG MORI Thailand Special Promotion

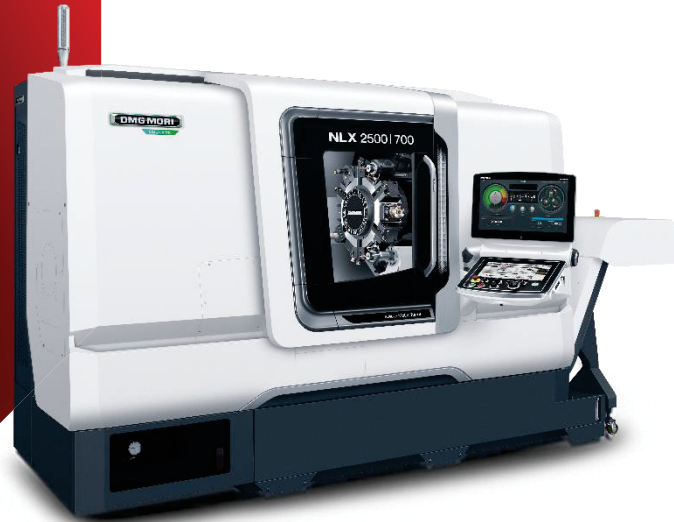
## NLX 2500 | 700

Only **1** unit available

Stock Machine in  
DMG MORI Thailand

### Top performance in the field of turning centres

1. Slideways(Block way) are used for all axes.
2. Coolant circulation inside the castings controls thermal displacement
3. With BMT (Built-in Motor Turret), milling capability is comparable to machining centers
4. High-speed rotary tool spindle: 10,000 min<sup>-1</sup>
5. Y-axis travel: ±50 mm (Y axis spec.)
6. Max. turning length 705 mm



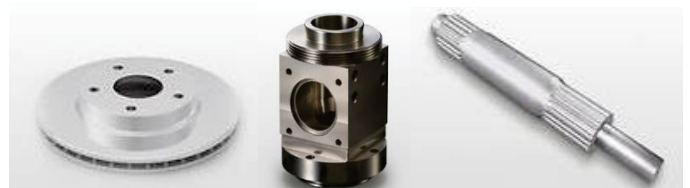
### Specifications :

- + NLX 2500 | 700 <Milling Specification>
- + Control Mitsubishi M730UM with CELOS - ERGOline Touch
- + [Spindle 1] KITAGAWA 10in. Hollow
- + [Spindle 2] KITAGAWA 8in. Hollow Chuck
- + Y-axis
- + 12-station bolt-tightened turret
- + Rotary tool spindle 40/ 14 Nm, 10,000 min<sup>-1</sup>
- + Chip conveyor (right discharge, hinge type) (/500)(/700)
- + High-pressure coolant system (800/ 1,100 W)
- + Chuck top coolant (Main spindle and Sub spindle)
- + Manual in-machine tool presetter (Spindle 1 - pivoting type and Spindle 2 - removable type)
- + Signal lamp 4 colors (Red, yellow, green, blue)
- + Workpiece unloader (built-in type) and Spindle 2 workpiece ejector
- + Technology Cycle(Gear Hobbing and Alternating speed)
- + T32213 O.D.cutting rotary tool holder (MAX.φ26,6000min<sup>-1</sup>)
- + T32214 Face cutting rotary tool holder(MAX.φ26,6000min<sup>-1</sup>)

### NLX 2500

Top performance in the field of turning centres

Max. X travels	260 mm
Max. turning length	728 mm
Max. turning diameter	460 mm
Max. spindle motor speed	4,000 rpm
Drive power rating (100% DC)	18.5 kW (AC)
Max. bar capacity diameter	80 mm



Contact us for more information

### Sumipol Corporation Limited

284 On-Nut Road, Kwaeng Prawet, Khet Prawet, Bangkok 10250  
Telephone :0-2762-3000 Fax : 0-2026-6260  
Phone : 094-254-6269 Email : anon-p@sumipol.com

