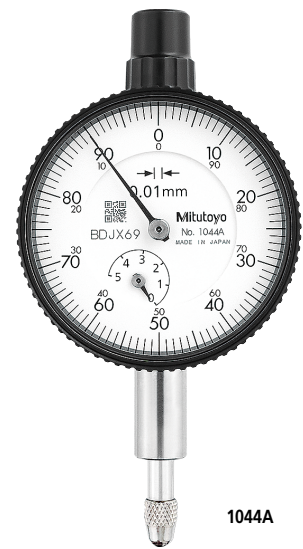




## SERIES 1 — Compact Type, Small Diameter

- Compact dial indicators ideal for restricted-space applications in gaging jigs.
- The indicator is highly durable thanks to its oil- and water-tight design, quenched hardened stainless-steel, carbide contact point, and a grand gear made of wear- and deformation-resistant material.
- Application of an anti-reflective and hard surface coating improves scale visibility along with scratch and chemical resistance.



1044A

### SPECIFICATIONS

Code No.		Graduation (mm)	Range (range/rev) (mm)	Maximum permissible error (MPE) (μm)						Dial reading	Measuring force (N)
w/lug	Flat-back			Indication error			Measuring range	Hysteresis	Repeat-ability		
		1/10 Rev	1/2 Rev	1 Rev							
1013A-10	1013AB-10	0.002	1 (0.2)	2.5	4	5	6	2.5	1	0-100-0	1.5 or less
1040A	1040AB	0.01	3.5 (0.5)	8	10	11	13	4	3	±0-50	1.4 or less
1041A	1041AB	0.01	3.5 (0.5)	8	10	11	13	4	3	0-25-0	1.4 or less
1044A	1044AB	0.01	5 (1)	8	10	11	13	4	3	±0-100	1.4 or less
1044A-15	1044AB-15	0.01	5 (1)	8	10	11	13	4	3	±0-100	0.4 or less*
1044A-60	1044AB-60	0.01	5 (1)	8	10	11	13	4	3	±0-100	2.0 or less
1045A	1045AB	0.01	5 (1)	8	10	11	13	4	3	0-50-0	1.4 or less
1109A-10	1109AB-10	0.001	1 (0.2)	2.5	3.5	4.5	5	2	1	0-100-0	1.5 or less
1124A	1124AB	0.005	3.5 (0.5)	6	9	10	12	3.5	3	±0-50	1.4 or less

\* For low measuring force type, use in the vertical orientation.

Note: Completed products inspection is performed in the vertical orientation (contact point downward) and the stated accuracy is guaranteed.

Code No.		Graduation (in)	Range (range/rev) (in)	Accuracy (in)			Repeat-ability (in)	Dial reading	Measuring force (N)
w/lug	Flat-back			First 1 Rev/2.5 Rev/10 Rev	Retrace				
1410A	1410AB	0.001	0.25 (0.1)	±0.001/±0.001/—	0.0002	±0.0002	0-100	1.4 or less	
1411A	1411AB	0.001	0.25 (0.1)	±0.001/±0.001/—	0.0002	±0.0002	0-50-0	1.4 or less	
1410A-10	1410AB-10	0.001	0.25 (0.1)	±0.001/±0.001/—	0.0002	±0.0002	0-100	1.4 or less	
1780A	1780AB	0.001	0.125 (0.05)	±0.001/±0.001/—	0.0002	±0.0002	0-50	1.4 or less	
1781A	1781AB	0.001	0.125 (0.05)	±0.001/±0.001/—	0.0002	±0.0002	0-25-0	1.4 or less	
1506A	1506AB	0.0005	0.125 (0.05)	±0.0005/±0.0005/—	0.00016	±0.0001	0-50	1.4 or less	
1507A	1507AB	0.0005	0.125 (0.05)	±0.0005/±0.0005/—	0.00016	±0.0001	0-25-0	1.4 or less	
1670A	1670AB	0.0005	0.1 (0.04)	±0.0005/±0.0005/—	0.00016	±0.0001	0-40	1.4 or less	
1671A	1671AB	0.0005	0.1 (0.04)	±0.0005/±0.0005/—	0.00016	±0.0001	0-20-0	1.4 or less	
1802A-10	1802AB-10	0.0001	0.025 (0.01)	±0.0001/±0.0001/—	0.0001	±0.00003	0-10	1.5 or less	
1803A-10	1803AB-10	0.0001	0.025 (0.01)	±0.0001/±0.0001/—	0.0001	±0.00003	0-5-0	1.5 or less	

Note: Completed products inspection is performed in the vertical orientation (contact point downward) and the stated accuracy is guaranteed.