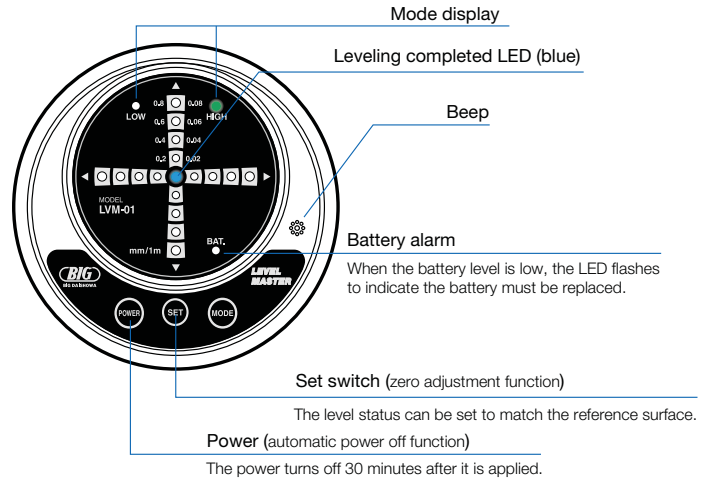


PRECISION ELECTRON LEVEL
LEVEL MASTER

For level management of machine tools/precision assembly devices

- 2-axis simultaneous level detector.
- Notifies leveling completion with LED and beep.
- Uses optical level detection sensor.

High precision of
 0.01mm or less per 1m



Instantaneous display of level status with LED

HIGH Mode

- Flashing: Over 0.08mm
- Lit: 0.08mm or less
- Lit: 0.06mm or less
- Lit: 0.04mm or less
- Lit: 0.02mm or less
- Lit: 0.01mm or less

Tilt at 1m distance

LOW Mode

- Flashing: Over 0.8mm
- Lit: 0.8mm or less
- Lit: 0.6mm or less
- Lit: 0.4mm or less
- Lit: 0.2mm or less
- Lit: 0.1mm or less

Tilt at 1m distance

Notifies leveling completion with LED and beep

HIGH Mode

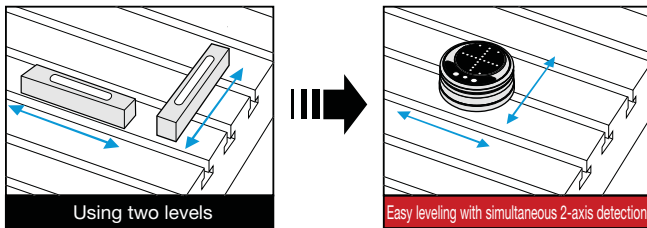
When level is
0.01mm/1m or less

LOW Mode

When level is
0.1mm/1m or less

Notification with LED (blue) and beep

2-axis simultaneous detection High precision of 0.01mm or less per 1m



2-axis simultaneous detection makes leveling drastically faster and more economical, compared to the conventional process of using two separate levels.

Model	LVM-01
Minimum read value	0.01mm/1m
Power	Alkaline dry cell: LR03 (AAA) x 4P
Automatic power off	Power off 30 minutes after application
Operating temperature range	0°C - 40°C (recommended 20°C ±5°C)
Battery life	50 continuous hours
Dimensions	φ109 x H46
Weight	0.99kg

※ For high-precision level adjustment, we recommend confirming the level with a reference surface such as a surface plate before use.

Set Contents

- LEVEL MASTER body
- Exclusive aluminum case
- Battery (Alkaline dry cell: LR03 (AAA) x 4 pcs)
- Operation manual
- Inspection Certificate



MEASURING TOOLS