

Magnetic Height Block

Material Structural steel

Accessories Mounting bolt

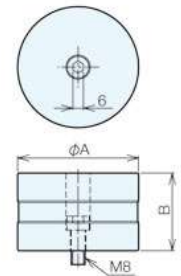
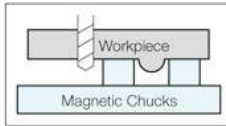
- Protects the top surface of the magnetic chuck
- Improves the precision of the top surface of the magnetic chuck (enables self-cut)
- Fixed by mounting bolt
- Avoids interference with through hole drills and the workpiece, etc.



Specifications

Order No.	No.	A	B	Weight (kg)
114993	MHB-R70C-15	70	15	0.4
110442	MHB-R70C-45	70	45	1.3
114994	MHB-R50C-32	50	32	0.5

Usage Examples



No.E-939

Magnetic Height Block with Lift Function

Material S45C

Accessories Mounting bolt

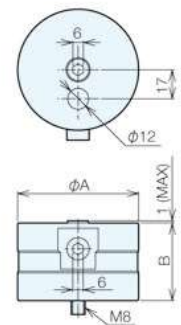
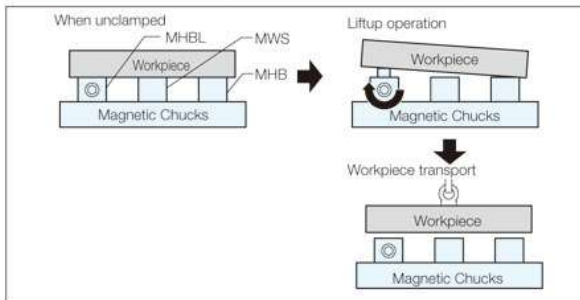
- Supports removing workpieces that are adsorbed by residual magnetism, etc. during unclamping



Specifications

Order No.	No.	A	B	Weight (kg)
114995	MHB L -R70C-32	70	32	0.9
114996	MHB L -R70C-45	70	45	1.3

Usage Examples



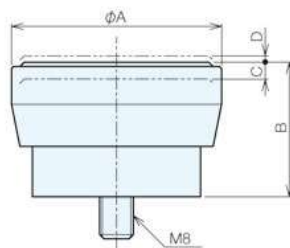
No.E-939

Mag-work Support

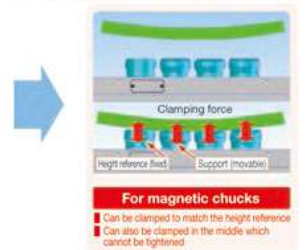
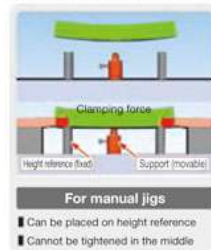
- Supports uneven workpieces
- Supports easy chattering workpieces

Specifications

Order No.	No.	A	B	C	D	Weight (kg)
100968	MWS-R50-32	$\phi 57$	32	2.5	1.5	0.4
110174	MWS-R76V-45	$\phi 76$	45	3	3	1.3



Accuracy stability of face milling for deformed workpieces or castings with a rough surface



No.E-939

Controllers ST120F/ST200F

Specifications and External Dimensions



ST120F

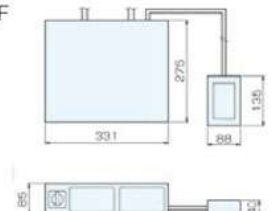
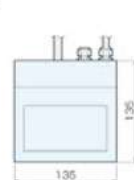
ST200F

Order No.	No.	Weight (kg)
107694	ST120F	2.5

Order No.	No.	Weight (kg)
107695	ST200F	5.9

ST120F

ST200F



Specifications

Power supply: 200 V AC single phase 50/60 Hz
Power cable length: 3.5m
Output cable length: ST120F 2.5m/ST200 4.5m